



ANNIVERSARY 16683B



ANNIVERSARY 16683B Model number: 31ANN16683BH19

3 beds • 2 baths • 1088 sq.ft. • 16' width • 68' depth

Our home building facilities invest in continuous product and process improvements. Plans, dimensions, features, materials, specifications and availability are subject to change without notice or obligation. Renderings and floor plans are representative likenesses of our homes and may differ from the actual homes. We invite you to tour a Home Center near you and inspect the highest value in quality housing available or call (903) 935-4242 to speak with a Home Consultant. Copyright 2017, CMH. All rights reserved.

<https://www.claytonhomesofmarshall.com>

CLAYTON HOMES- MARSHALL

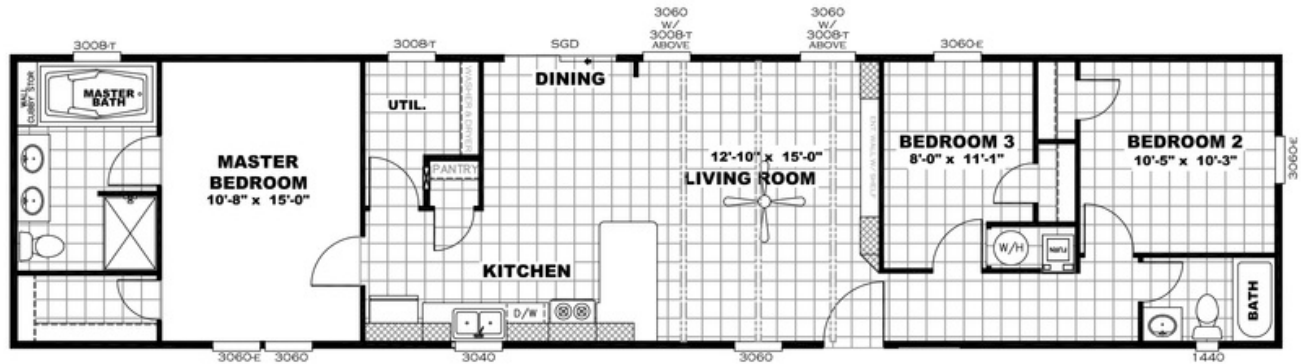
4812 EAST END BLVD
MARSHALL, TX 75670

Monday - Thursday: 9am - 7pm
Friday: 9am - 6pm
Saturday: 9am - 5pm
Sunday: Closed

(903) 935-4242



ANNIVERSARY 16683B



ANNIVERSARY 16683B Model number: 31ANN16683BH19

3 beds • 2 baths • 1088 sq.ft. • 16' width • 68' depth

Our home building facilities invest in continuous product and process improvements. Plans, dimensions, features, materials, specifications and availability are subject to change without notice or obligation. Renderings and floor plans are representative likenesses of our homes and may differ from the actual homes. We invite you to tour a Home Center near you and inspect the highest value in quality housing available or call (903) 935-4242 to speak with a Home Consultant. Copyright 2017, CMH. All rights reserved.

<https://www.claytonhomesofmarshall.com>

CLAYTON HOMES- MARSHALL

4812 EAST END BLVD
MARSHALL, TX 75670

Monday - Thursday: 9am - 7pm
Friday: 9am - 6pm
Saturday: 9am - 5pm
Sunday: Closed

(903) 935-4242