



## ANS28764A BREADMAKER



### ANS28764A BREADMAKER

Model number: 38ANS28764AH15

4 beds • 2 baths • 2128 sq.ft. • 28' width • 76' depth

Our home building facilities invest in continuous product and process improvements. Plans, dimensions, features, materials, specifications and availability are subject to change without notice or obligation. Renderings and floor plans are representative likenesses of our homes and may differ from the actual homes. We invite you to tour a Home Center near you and inspect the highest value in quality housing available or call (903) 935-4242 to speak with a Home Consultant. Copyright 2017, CMH. All rights reserved.

<https://www.claytonhomesofmarshall.com>

#### CLAYTON HOMES- MARSHALL

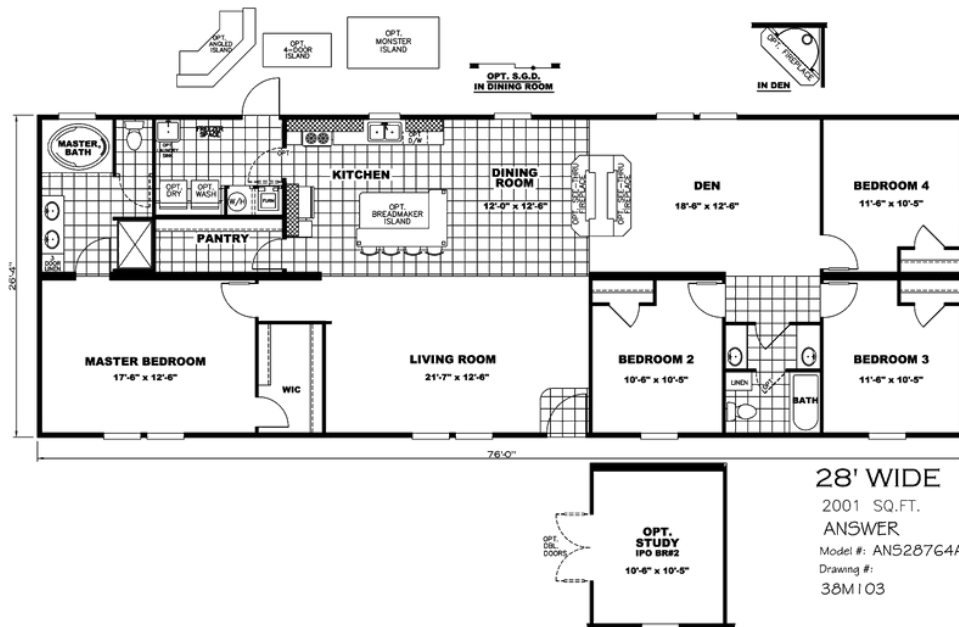
4812 EAST END BLVD  
MARSHALL, TX 75670

Monday - Thursday: 9am to 6pm  
Friday: 9am to 6pm  
Saturday: 9am to 5pm  
Sunday: Closed

(903) 935-4242



# ANS28764A BREADMAKER



**28' WIDE**  
2001 SQ.FT.  
ANSWER  
Model #: ANS28764A  
Drawing #:  
38M103

## ANS28764A BREADMAKER Model number: 38ANS28764AH15

**4 beds • 2 baths • 2128 sq.ft. • 28' width • 76' depth**

Our home building facilities invest in continuous product and process improvements. Plans, dimensions, features, materials, specifications and availability are subject to change without notice or obligation. Renderings and floor plans are representative likenesses of our homes and may differ from the actual homes. We invite you to tour a Home Center near you and inspect the highest value in quality housing available or call (903) 935-4242 to speak with a Home Consultant. Copyright 2017, CMH. All rights reserved.

<https://www.claytonhomesofmarshall.com>

**CLAYTON HOMES-  
MARSHALL**

**4812 EAST END BLVD  
MARSHALL, TX 75670**

Monday - Thursday: 9am to 6pm  
Friday: 9am to 6pm  
Saturday: 9am to 5pm  
Sunday: Closed

(903) 935-4242